



design tiles

*Celebrating 20 Years*

---

**COMMERCIAL PROFILE 2020**

---

# COMMERICAL PROFILE

Our Commercial Projects division consists of a large team of experienced fixing tilers & trades people that assure an excellent service for a wide variety of projects. We have over 22 years of experience in the industry. Our tilers are qualified to lay a wide range of tiles including porcelain, ceramics, mosaics, natural stone, stone panels, claddings, mechanically fixed stone, concrete and stone polishing.

We understand that there are a number of factors that go towards achieving the complete commercial refurbishment package from tender stage to final handover. We believe our exceptional service can ensure the highest level of quality of work is presented. Our team can tender all documentation to all factors of satisfaction at any professional level.

## DESIGN TILES COMMERCIAL SERVICES

- Technical advice in relation to product selection
- Frequent consultation with the builder/ architect on specific aspects of each project
- Individual advice on site obstacles in order to achieve your desired results
- Design Tiles will allocate a Project Supervisor to oversee all aspects of renovation
- Refurbishments
- Tiling
- Stone Pin fixing
- Waterproofing services
- Rendering

### Recently completed commercial projects (2020)

District Dining  
Parramatta Square - Parramatta 2150  
Ceramic tiling, natural stone & waterproofing application to commercial kitchen & restaurant dining floor & walls

Hyatt Regency  
162 Sussex St. Sydney 2000  
Floor tiling & acoustic underlay installed in 487 rooms as part of hotel refurbishment

AEMC (Australian Energy Market Commission)  
L15 - 60 Castlereagh St. Sydney 2000  
Ceramic tiling installed to common areas & office kitchen

West Ryde Public School  
6 Endeavour St. West Ryde 2114  
Ceramic tiling to new school building wet areas & activities rooms

First State Super  
388 George St. Sydney 2000  
Ceramic tiling, waterproofing installation, natural stone & mosaic installation

FSA Group  
1 Oxford St. Surry Hills 2010  
Ceramic tiling to entry foyer & common spaces

### Upcoming projects 2020

Brookfield Properties  
32 Carrington St. Sydney 2000  
7 level building refurbishment

Zurich Workplace  
118 Mount St. Sydney 2000  
Waterproofing, ceramic tiling, acoustic underlay & natural stone installation

Heinemann Duty Free  
Sydney International Airport Mascot NSW 2020  
Natural stone & ceramic tiling to general floor area

Domestic Airport Arrivals  
Sydney Domestic Airport Mascot NSW 2020  
Staff & family room amenities upgrade

## FOR ENQUIRIES

**Ibrahim Ibrahim**

Director  
[ibrahim@designtiles.com.au](mailto:ibrahim@designtiles.com.au)

**Leonardo Andrade**  
Projects manager  
[leo@designtiles.com.au](mailto:leo@designtiles.com.au)



The Langham 2019



Gilbert + Tobin | Barangaroo 2016 | Woods





UNSW Bookshop | Kensington 2019| WMK Architects



Club Mounties | Mt Pritchard 2016 - 2017 | WMK Architects

# 2016-2019 WORKS

## Completed commercial projects

ARMIDALE HOSPITAL, ARMIDALE ALLIED HEALTH  
Scope: Facilities Upgrade

BANYAN CAFE  
Canterbury Leagues Club, Belmore  
Scope: Amenities & Cafe Upgrade  
Architect: Altis Architecture

AQUALAND  
Tower 2 Level 47, Barangaroo, Sydney NSW  
Scope: Stoneworks, Level 47 refurbishment

WESTPAC PLACE  
275 Kent Street, Sydney NSW  
Scope: Tiling of Executive Levels, including Kitchen & Teapoint  
Tiling & Amenities

CLUB MOUNTIES  
101 Meadows Road, Mount Pritchard NSW  
Scope: Stone escalator entrance works

CHIFLEY DINING - CHIFLEY TOWER  
2 Chifley Square, Sydney NSW  
Chifley Dining & Kitchen refurbishment works

MARRICKVILLE METRO SHOPPING CENTRE  
34 Victoria Rd, Marrickville NSW  
Scope: Shopping center floor refurbishment and shopping  
precint upgrade

WESTPAC PLACE (MIRVAC UPGRADE)  
275 Kent Street, Sydney  
Scope: Amenities Multiple Levels - Commercial Waterproofing &  
Amenities Tiling

AMP CAPITAL  
123 Pitt Street, Sydney NSW  
Scope: Landlord Lobby Upgrade, Levels 13 & 14 Installation &  
cutting of all stone slab work & stone  
tiling trades & stone sealing install

CANTERBURY LEAGUES CLUB  
10 Bridge Street, Belmore NSW  
Scope: Gaming Lounge  
Architect: Altis Architecture PTY LTD

MILLINIUM/ INMARK  
Level 33 MLC Centre, Sydney NSW  
Scope: Reception Upgrade

HEINEMANN  
Head Office Mascot  
Scope: Office Fit Out / Reception - Customs House  
Refurbishment  
Architect: Geyer Architects

HEINEMANN DUTY FREE  
Sydney International Airport  
Scope: Retail & Duty Free Refurbishment Works  
Architect: Geyer

GILBERT + TOBIN LAWYER  
Tower 2 Amenities & Lobby, Levels 32-35, Barangaroo  
Scope: Commercial Building Works  
Architect: Woods Bagot

CLUB MOUNTIES  
101 Meadows Road, Mount Pritchard NSW  
Scope: Gymnasium & Café Tiling Upgrade

UTS GROUP STUDY AREA  
Level 4 & 5 31 Quay St, Haymarket Sydney  
Scope: Tiling of Splashbacks in Study Area

SEALIFE PENGUINS DARLING HARBOUR  
Wheat Road, Darling Harbour  
Scope: Sealife Artic Enclosure - Commercial waterproofing to a  
temperature controlled zone install black pebbles & seal pebble  
flooring with approved surface sealer | Staff Quarters - Divers  
Shower: Install Tiles including Commercial Waterproofing

JONES DAY  
Level 40/41 88 Phillip Street, Sydney  
Scope: Lobby and Reception Upgrade with Amenities

AJ PARK  
Level 14 111 Elizabeth Street, Sydney  
Scope: Level 14 Entrance & Reception Upgrade

AMP CAPITAL  
123 Pitt Street, Sydney  
Scope: Landlord Lobby Upgrade, Levels 11 & 12 Installation &  
cutting of all stone slab work & stone tiling trades & stone sealing  
install

CLUB DOOLEYS/ LIDCOMBE CATHOLIC CLUB  
24-26 John Street, Lidcombe NSW  
Scope: Club dining upgrade & conservatory bar Architect: Abeo  
Architects

VAN CLEEF & ARPELS  
112 Castlereagh Street, Sydney  
Scope: Installation of stonework & stone sealing Architect:  
Landmark Architects

CLUB MOUNTIES  
101 Meadows Road, Mount Prichard NSW  
Scope: Asian Restaurant / Terrace & Exterior Paving  
Architect: WMK Architecture



MOXON SPORTS & GAMING - BANKSTOWN TENNIS & SPORTS CLUB PUNCHBOWL  
61 Moxon Road Punchbowl  
Architect: Bergstrom Architecture  
Amenities & Bar Upgrade

THE VERANDAH BAR  
55-65 Elizabeth Street Sydney  
Architect: Paul Kelly Design  
Amenities & Verandah Bar upgrade

ABC ULTIMO  
700 Harris Street Sydney Architect: Hot Black  
Lobby & Entrance Upgrade

WESTPAC BANK  
275 Kent Street Sydney Architect: Geyer Architecture  
Amenities & Kitchen Fitout upgrade Levels 20,21, Including Executive Floors

CAMPBELLS STORES AT THE ROCKS  
7-27 Circular Quay West Road, The Rocks Sydney  
Builder: Buildcorp  
Architect: Johnson Pilton Walker

MEADOWBANK APARTMENTS  
115 Bowden Street, Meadow bank NSW Auslon  
Property Managers

CARPE DIEM - STAGE 2 BARANGAROO  
Level 31, International Tower 2, Barangaroo, Sydney  
Builder: Buildcorp

SALTAIRE APARTMENTS  
21-23 Prince Street, Cronulla NSW  
Scope: Feature wall & Acoustic Underlay Installation  
Architect: Vic Lake Architect

UNIVERSITY OF WOLLONGONG / SYDNEY BUSINESS SCHOOL  
1 Macquarie Place Sydney, Level 10 Male & Female  
Amenities upgrade

Sydney CBD Tattersalls Club  
181 Elizabeth St, Sydney NSW 2000  
Amenities upgrade

Ausgrid new HQ  
24 Campbell St. Haymarket 2000

Companionway  
L39 200 Barangaroo Ave Sydney 2000  
Wet areas tiling & waterproofing

Uniting Bruce Sharpe  
110 Frederick St, Rockdale 2216  
Entry foyer redevelopment - waterproofing & floor tiling

Colonial First State  
L2-3 200 Barangaroo Ave. Sydney 2000  
Natural stone installation to main stair (pictured on the left), boardroom natural stone installation, mosaic tiling to workstations

IBM Genesis  
388 George St. Sydney 2000  
Wet areas waterproofing & tiling, common area floor tiling

Fraser properties  
1 Homebush Bay drive - Rhodes NSW 2138  
Ceramic, mosaic & large ceramic panels installation in 2 levels plus EOT facilities

Crowne Plaza Terrigal Pacific  
Pine tree ln. Terrigal NSW 2260  
Ballroom amenities & coffee bar upgrade & Lord Ashley Bar natural stone redevelopment

Rydges International airport  
Sydney Airport, 8 Arrival Ct. Mascot NSW 2020  
Restaurant & entry foyer redevelopment in natural stone & mosaics

North Bondi units  
4 Hashtings Pde. North Bondi 2026  
4 level building, ceramic tiling to wet areas, circulation area & external communal areas

Sur de Mere residential  
1 Abel place - Cronulla NSW  
Demolishing, waterproofing & re-tiling building common area

The Star Casino - Balla Restaurant  
The Star Casino - Pymont  
Installation of new floor finish to restaurant floor

Vivcourt  
188 Oxford St, Paddington NSW 2021  
Terracotta & natural stone works around common collaboration area

The Langham Hotel  
89-113 Kent St, Millers Point NSW 2000  
“All day dining” & kitchen refurbishment in natural stone



Colonial First State main stairway



Toyota ERO  
4 Murray Rose Ave. Sydney Olympic park 2127  
Training space & main foyer redevelopment, collaboration space tiling

IBM  
601 Pacific Highway St Leonards 2065  
Breakout and common space tiling

SCEGGS Redlands  
272 Military Rd. Cremorne 2090  
Stair tiling throughout the school property (3x stairs, 5x levels/each), new bathrooms waterproofing & tiling

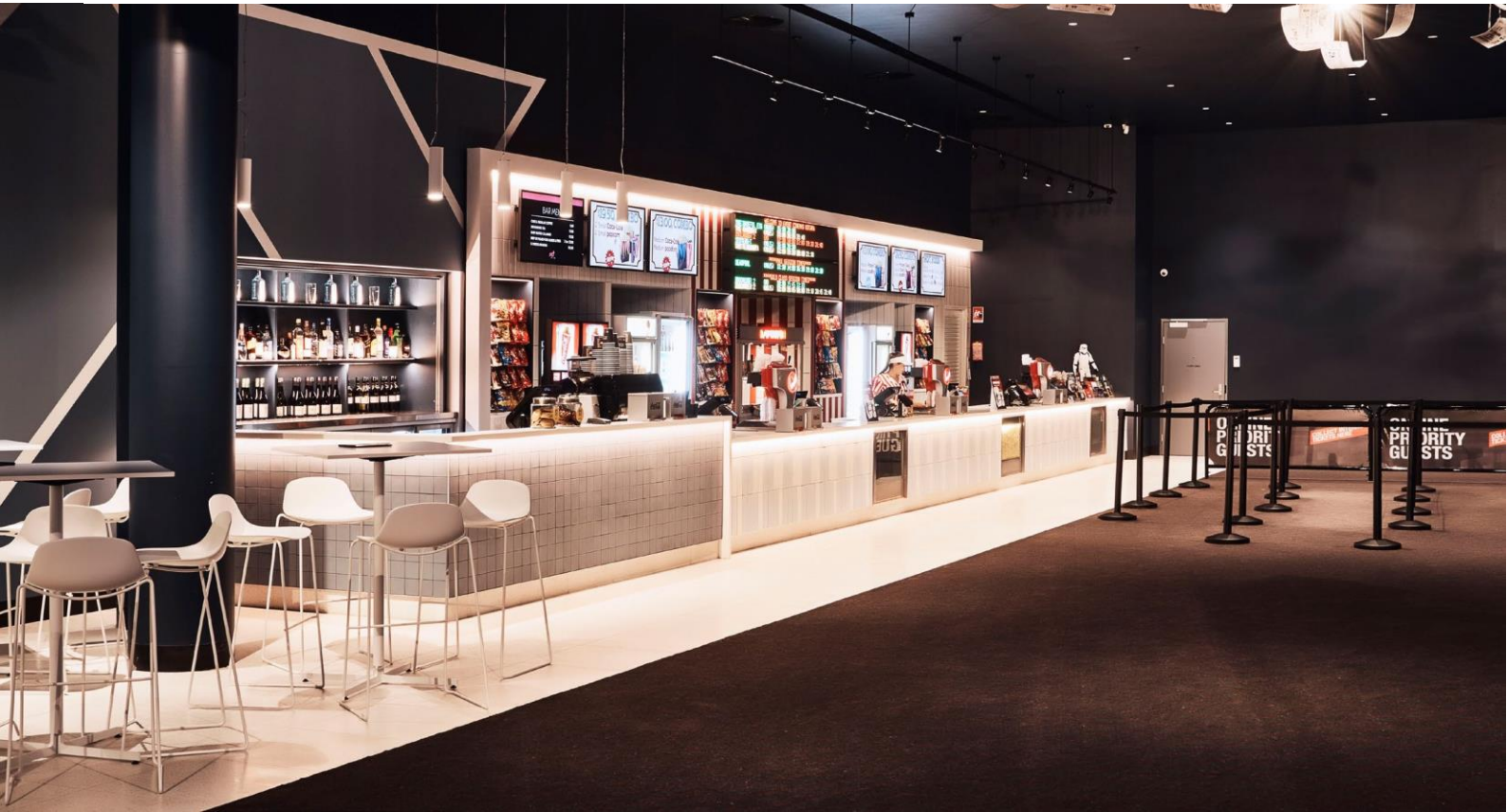
Domestic T2 airport  
Domestic Airport T2, Departure Plaza Mascot 2020  
Amenities redevelopment using mosaics, large format porcelain panels, waterproofing & epoxy grouting

DOJ (Department of Justice)  
19 O’Connel St. Sydney 2000  
7 levels wet area waterproofing & ceramic tiling, new accessible entry re-tiled to comply with Australian Standards

Tableau  
L7 - 155 Clarence St. Sydney 2000  
Common area, reception & breakout ceramic tiling



Club Mounties main entrance



Event Cinemas Kotara



Heinemann Duty Free | Sydney International Airport | Geyer Architects



Habitat House  
64 Kippax St. Surry Hills 2010  
Foyer natural stone tiling, 7 levels amenities tiling & waterproofing, rooftop redevelopment in natural stone pavers & mosaic works

Banco Chambers  
L15-16 60 Martin Place Sydney 2000  
Ceramic tiling & waterproofing to bathroom, natural stone installation to communal floor area & office portals entry

CBUS Display Suite  
77 Market St. Sydney 2000  
Ceramic tiling, natural stone installation, large format ceramic panels & display slabs hanging

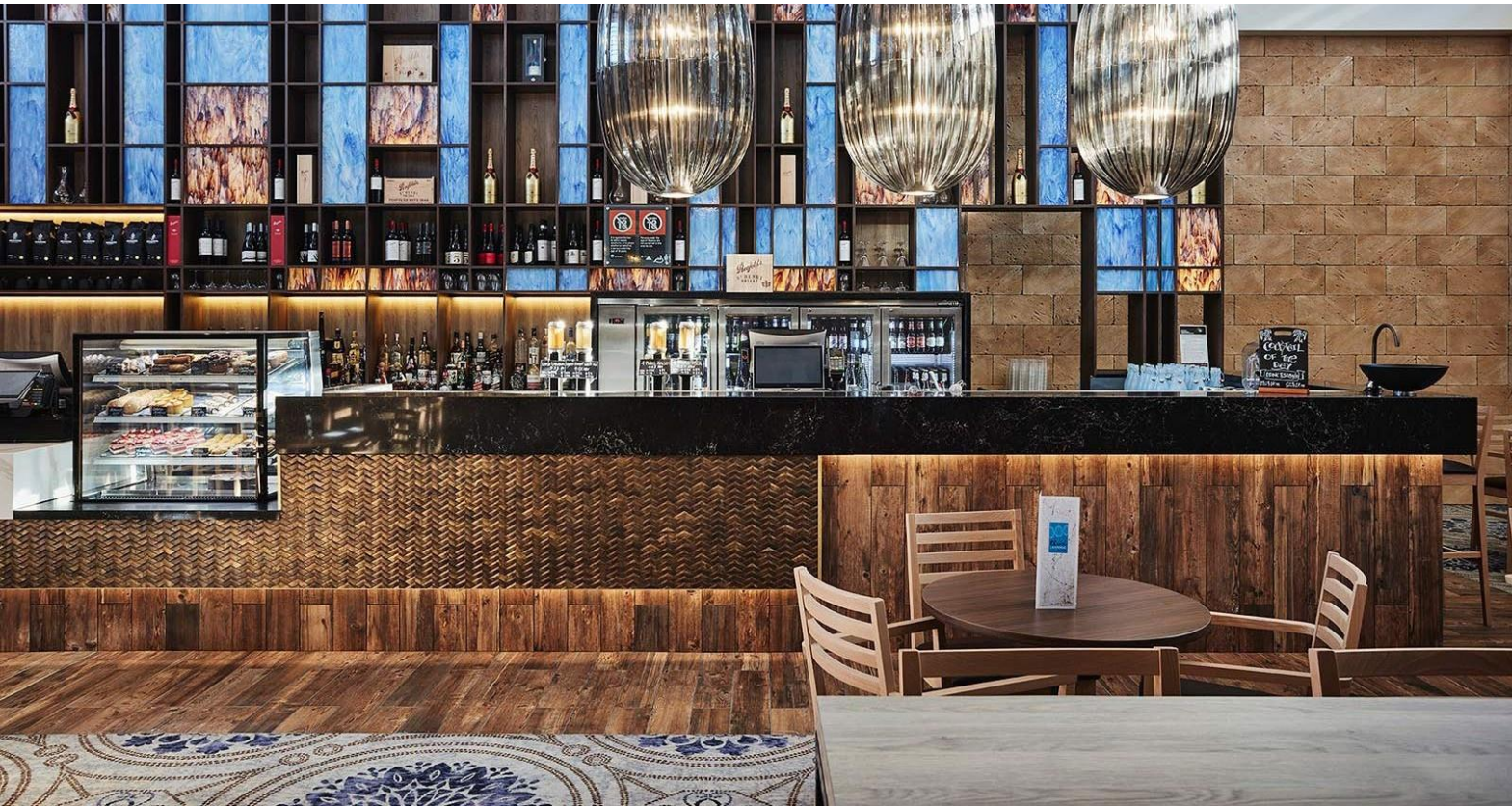
ISPT  
477 Pitt St. Sydney 2000  
Granite pavers installation to common area balconies

Kimberly Clark  
100 Arthur St. North Sydney 2060  
Ceramic tiling to main office circulation & common areas splashback tiling

UNSW Bookshop  
Quadrangle building, College Rd, Sydney 2052  
Terracotta & ceramic tiling to main bookshop area & cafe



Heinemann Duty Free



Lloyd's Bistro - Dooleys Lidcombe Catholic Club | 20-24 John St, Lidcombe

For additional information please visit our website and Instagram at [designtiles.com.au](http://designtiles.com.au) & @DesignTilesCommercial

Thank you for your time